



THREADED HOLDER

REMBE® threaded holders are particularly suitable for pressure safeguarding of small-scale systems, e. g. pressure systems in laboratories, autoclaves, small pressure vessels, etc.

The holders are made in ss304, ss303 or ss316Ti. Depending on the process medium other alloys, e. g. Nickel, Monel, Titan, Hastelloy, are available. Standard connection threads are NPT or G.

The threaded holders are suited to accommodation of conventional domed rupture discs as well as for triple-section rupture discs.

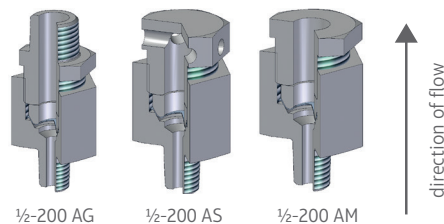
Due to the construction of the threaded holders the tag plate of the disc is separately supplied. The tag plate must visible be fixed at the fitting.

Type ½-200 (1/2") suitable for up to max. 200 bar (2,900 psi)

Technical data

Type	Connections		Wrench size (mm)		Length of unit (mm)
	Inlet	Outlet	Inlet	Outlet	
½-200 AG	¼" or ½"	¼" or ½"	30	32	~ 80
½-200 AM	¼" or ½"	free	30	32	~ 50
½-200 AS	¼" or ½"	muffled	30	32	~ 65

Different sizes, pressure classes, temperatures, materials and fittings available on request.



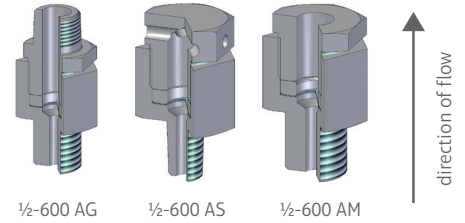
You can find detailed information and contact details for enquiries relating to threaded holders at www.rembe.de. Give us a call on: T +49 2961 7405-0 or contact us via email: info@rembe.de.





Type 1/2-600 (1/2") suitable for up to max. 600 bar (8,700 psi)

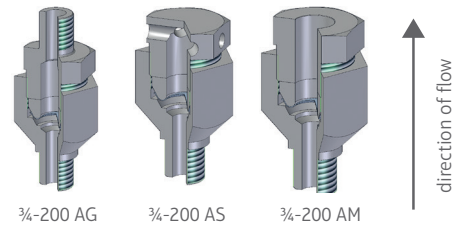
Technical data					
Type	Connections wrench size (mm)		Wrench size (mm)		Length of unit (mm)
	Inlet	Outlet	Inlet	Outlet	
1/2-600 AG	1/4" or 1/2"	1/4" or 1/2"	30	32	~ 75
1/2-600 AM	1/4" or 1/2"	centered	30	32	~ 55
1/2-600 AS	1/4" or 1/2"	muffled	30	32	~ 60



Different sizes, pressure classes, temperatures, materials and fittings available on request.

Type 3/4 200 (3/4") suitable for up to max. 200 bar (2,900 psi)

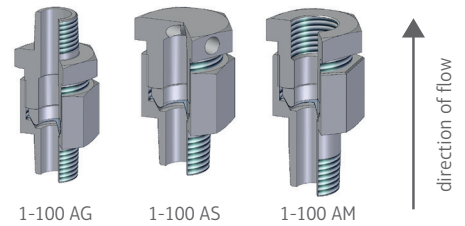
Technical data					
Type	Connections wrench size (mm)		Wrench size (mm)		Length of unit (mm)
	Inlet	Outlet	Inlet	Outlet	
3/4-200 AG	1/4" or 3/4"	1/4" or 3/4"	46	41	~ 125
3/4-200 AM	1/4" or 3/4"	free	46	41	~ 80
3/4-200 AS	1/4" or 3/4"	muffled	46	41	~ 85



Different sizes, pressure classes, temperatures, materials and fittings available on request.

Type 1-100 (1") suitable for up to max. 100 bar (1,450 psi)

Technical data					
Type	Connections wrench size (mm)		Wrench size (mm)		Length of unit (mm)
	Inlet	Outlet	Inlet	Outlet	
1-100 AG	1/4" or 1"	1/4" or 1"	55	55	~ 125
1-100 AM	1/4" or 1"	free	55	55	~ 120
1-100 AS	1/4" or 1"	muffled	55	55	~ 95



Different sizes, pressure classes, temperatures, materials and fittings available on request.

Consulting. Engineering. Products. Service.